



| | | | | | | |
|----------|--|------|--|-----|-----------|--|
| PROJECT | | REF | | REV | ITEM CODE | |
| LOCATION | | DATE | | | PAGE | |

SANITARY WARE SPECIFICATION SHEET

| | | |
|--|---|--|
| Item Descriptions | GROHE (Germany) "Eurocube Joy" Single lever chrome plated basin mixer 1/2" S-Size with feather control; nominated flow rate 5.2 L/min in WELS Grade 2 ; Registration No. TM 17-0111 | Illustration/ Drawing |
| Dimensions | L98 x W52 x H200 mm |  <div></div> |
| Model | 23654000 | |
| Finish | Chrome Plated | |
| Country of origin | Germany | |
| Manufacturer | GROHE Limited | |
| Supplier | Acme Sanitary Ware Co. Ltd Mr. Eric Wong/ Mr. Don Yuen |  |
| Contact Tel/Fax | (852) 2388-7171 / (852) 2710-8012 | |
| E-mail | acme@acmesanitary.com.hk | |
| Website | www.acmesanitary.com.hk | |
| <p>"Eurocube Joy" Basin mixer 1/2" S-Size</p> <ul style="list-style-type: none">• monobloc installation• metal lever• GROHE FeatherControl Joystick cartridge• GROHE StarLight chrome finish• GROHE EcoJoy SpeedClean mousseur 5.7 l/min• GROHE QuickFix Plus installation system• pop-up waste set 1 1/4"• flexible connection hoses   | | |

Note:  [YouTube HK \(GROHE Eurodisc Joy\) https://www.youtube.com/watch?v=j7ulmjQH4eM](https://www.youtube.com/watch?v=j7ulmjQH4eM)

* All information of the above is for the reference only. No prior notice is made if any changes.



Acme Sanitary Ware Co. Ltd.

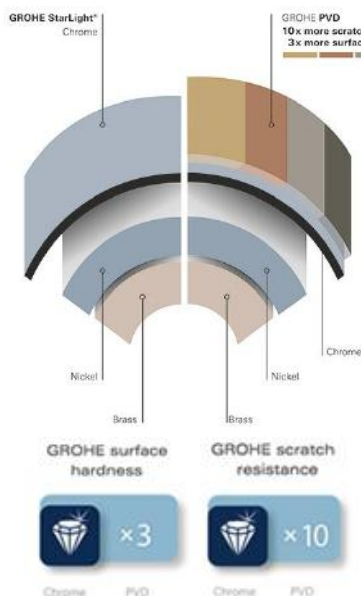
1/F, Acme Building, 22-28 Nanking Street, Kowloon, Hong Kong
Tel: 2388 7171 Fax: 2710 8012
Email: acme@acmesanitary.com.hk
Website: www.acmesanitary.com.hk



Pure Freude
an Wasser

| | | | | | | |
|----------|--|------|--|-----|-----------|--|
| PROJECT | | REF | | REV | ITEM CODE | |
| LOCATION | | DATE | | | PAGE | |

SANITARY WARE SPECIFICATION SHEET



Easy to clean thanks to the GROHE StarLight chrome coating

Just wipe the tap down with a dry cloth – the ultra smooth surface finish is scratch resistant and ensures a lasting luminous sheen. You'll save plenty of time cleaning while your tap always looks shiny and new.



GROHE EcoJoy with water-saving function for reduced consumption

GROHE EcoJoy reduces water consumption by up to 50% without compromising on performance. Whenever you turn on your tap, you will enjoy a full jet of water while saving money nonetheless.

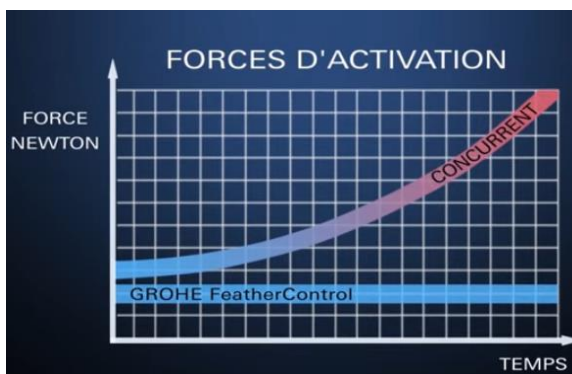


GROHE QuickFix Plus quick and easy installation in a few simple steps

Save time on the installation of your tap with GROHE QuickFix Plus. Consisting of fewer parts, our new system makes the installation process quicker and easier than ever.

Smooth joystick handling for effortless precision and ultimate convenience to last a lifetime. The brand new GROHE FeatherControl cartridge brings joystick control to a whole new level. Using state-of-the-art coated ceramic discs and an innovative sealing, the GROHE engineers have created a joystick cartridge with a wider volume and temperature angle – for a more precise control – with the same silky smooth operation as our renowned GROHE SilkMove® cartridge.

Only GROHE mixers deliver the unique GROHE FeatherControl experience. The solid smooth handling of our joystick-lever mixers perfectly expresses the quality and superiority of our brand.brand.



The wide FeatherControl temperature angle ensures more precise temperature control.

Effortless fingertip control and silky smooth operation, thanks to the superior ceramic disc-coating.

Even after years FeatherControl guarantees the same smooth operation as on day one.

Note:

* All information of the above is for the reference only. No prior notice is made if any changes.



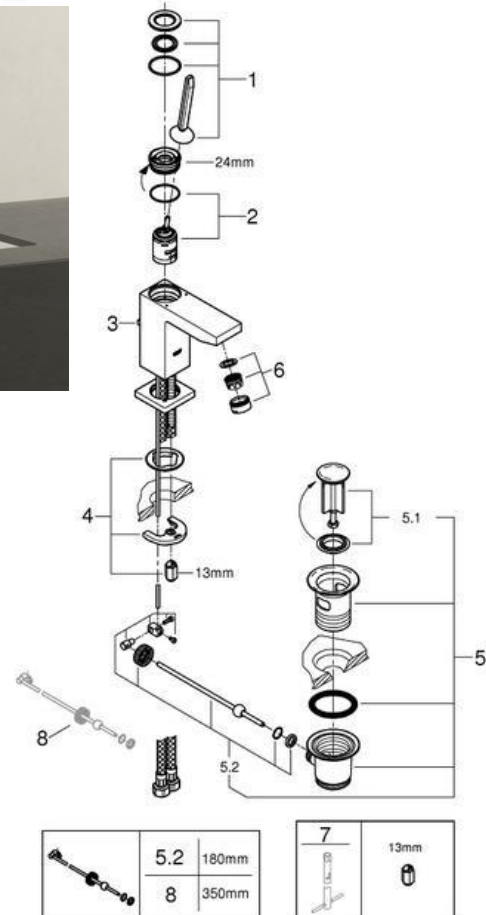
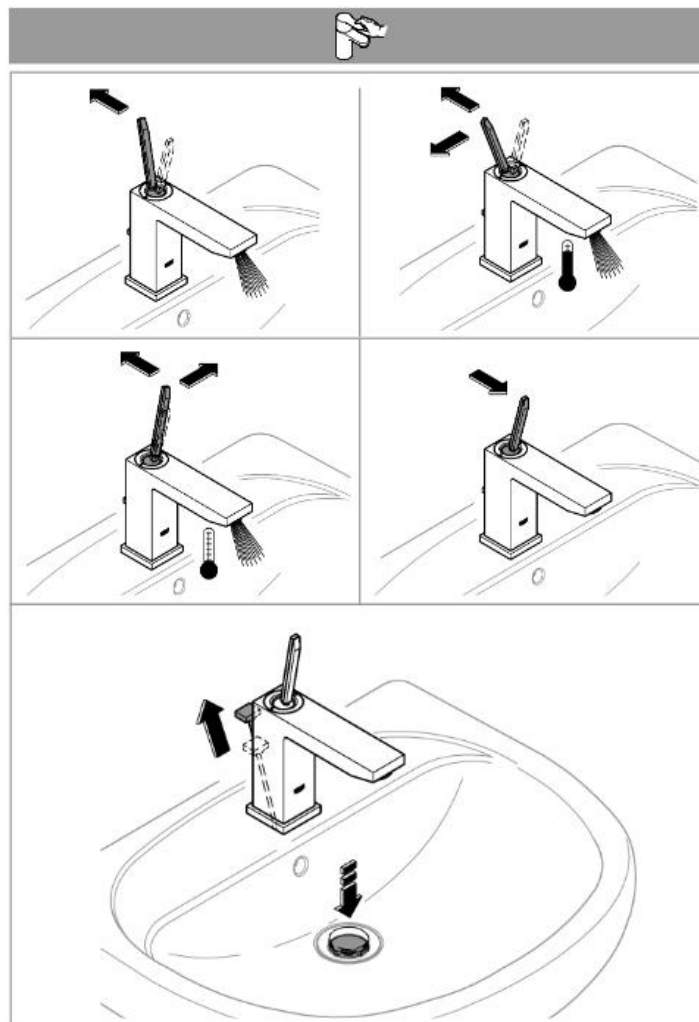
| | | | | | | |
|----------|--|------|--|-----|-----------|--|
| PROJECT | | REF | | REV | ITEM CODE | |
| LOCATION | | DATE | | | PAGE | |

SANITARY WARE SPECIFICATION SHEET

GROHE EUROCUBE JOY

MAKE A CLEAR STATEMENT

GROHE Eurocube Joy translates your feeling for confident clarity and purism into reality. The cosmopolitan, cubic design with its reduced, right-angled lines expresses quality and innovative thinking – first and foremost with the distinctive joystick for greater ease of use. Overall it's an expression of form providing perfect accents for your modern bathroom architecture. Utterly characteristic. Typical you.



| Pos.-nr. | Prod. description | Order-nr. |
|----------|---------------------------|-----------|
| 1 | Lever | 46945000 |
| 2 | Cartridge | 46907000 |
| 3 | Pop-up rod | 46787000 |
| 4 | Shank fastening assembly | 46645000 |
| 5 | Waste set 1 1/4" | 28910000 |
| 5.1 | Plug for waste set 1 1/4" | 07182000 |
| 5.2 | Eccentric rod | 07052000 |
| 6 | Mousseur | 48159000 |
| 7 | Mounting wrench | 19017000* |
| 8 | Ball rod | 07341000* |

* Optional accessories

Note:

* All information of the above is for the reference only. No prior notice is made if any changes.

註冊號碼 (Registration No.): TM 17-0111



自願參與用水效益標籤計劃 - 水龍頭
Voluntary Water Efficiency Labelling Scheme - Water Taps



茲證明
This is to certify that

將下列水龍頭在本計劃內註冊：
has registered the following water tap under this scheme :

| | | |
|--------------------------------|---|----------|
| 牌子 / Brand | : | GROHE |
| 型號 / Model | : | 23654XXX |
| 種類 / Type | : | Mixing |
| 原產地 / Country or Region Origin | : | Germany |

在用水效益標籤上展示的標誌

Symbolic Presentation on the Water Efficiency Label :



滴水點

Water droplet(s)

用水效益級別

Water Efficiency Grade :

2

耗水量

Water Consumption :

5.2

公升/分鐘

litres/minute

簽發日期: 17 August 2017
Date of Issue:



水務署
Water Supplies Department



水務署署長(周世威代行)
for Director of Water Supplies